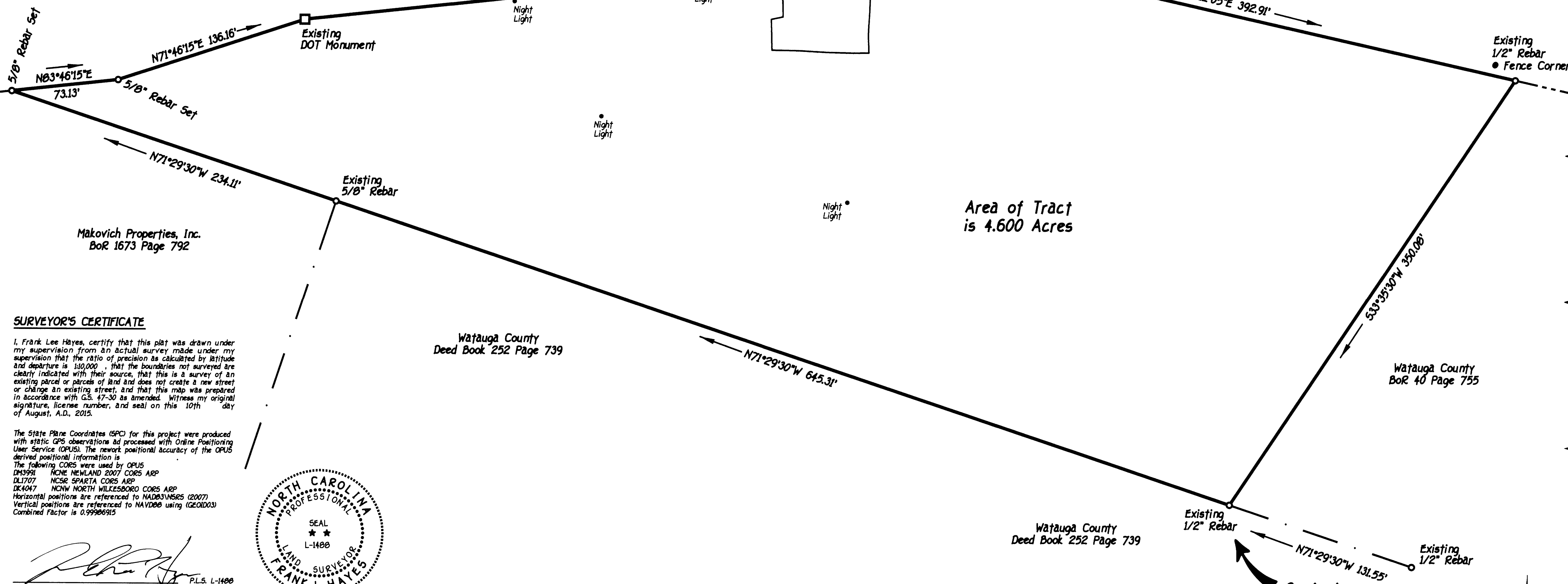


NCDOT Project 6.759003T

# US Highway 421

NCDOT Project 6.759003T



Area of Tract is 4.600 Acres

**SURVEYOR'S CERTIFICATE**

I, Frank Lee Hayes, certify that this plat was drawn under my supervision from an actual survey made under my supervision that the ratio of precision as calculated by latitude and departure is 1/10,000, that the boundaries not surveyed are clearly indicated with their source, that this is a survey of an existing parcel or parcels of land and does not create a new street or change an existing street, and that this map was prepared in accordance with G.S. 47-30 as amended. Witness my original signature, license number, and seal on this 10th day of August, A.D., 2015.

The State Plane Coordinates (SPC) for this project were produced with static GPS observations and processed with Online Positioning User Service (OPUS). The network positional accuracy of the OPUS derived positional information is:

The following CORS were used by OPUS:  
 DM3991 NCRS NEWLAND 2007 CORS ARP  
 DL1707 NCRS SPARTA CORS ARP  
 DK4047 NCRS NORTH WILKESBORO CORS ARP

Horizontal positions are referenced to NAD83/NSRS (2007)  
 Vertical positions are referenced to NAVD83 using (GEOID03)  
 Combined Factor is 0.99986915



*Frank L. Hayes*  
 P.L.S. L-1488

Wajauga County Deed Book 252 Page 739

Wajauga County Deed Book 252 Page 739

Wajauga County BoR 40 Page 755

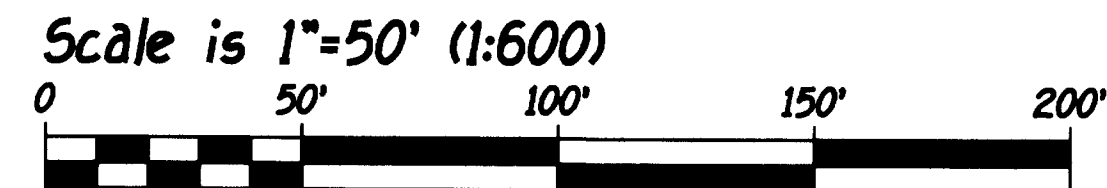
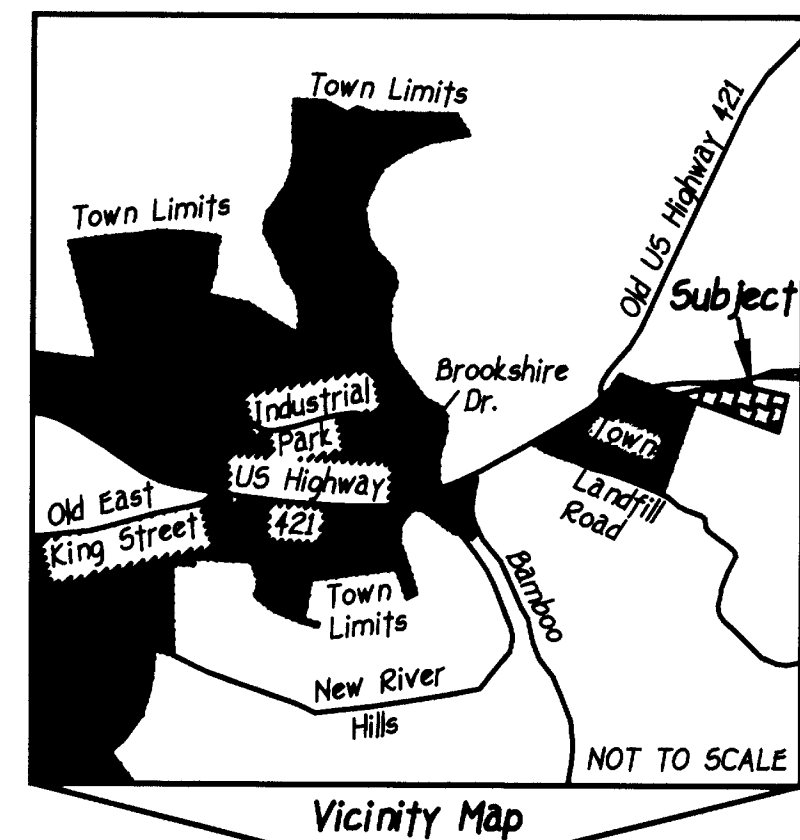
Annexation Plat of  
 a Portion of BoR 1489 Page 412  
 for  
**Brown of Boone III, LLC**  
 New River Township - Wajauga County  
 North Carolina  
 August 10, 2015

FILED: Amy J. Shook  
 Register of Deeds, Wajauga Co., NC  
 Fee Amt: \$21.00

Bk 25 Pg 398 (1)  
 Recorded: 02/06/2017 at 03:23:39 PM  
 Doc No: 655416 Kind: PLAT



Beginning  
 NCGS NAD '83  
 Coordinates  
 N=910,179.13  
 E=1,224,176.92



Appalachian Professional Land Surveyors & Consultants, PA C-2398  
 1480 U.S. Highway 421 South / Boone, North Carolina 28607 / (828) 264-0290

State of North Carolina  
 County of Wajauga  
 I, *Betty L. Stevens*, Review Officer of Wajauga County, certify that the map or plat to which this certification is affixed meets all statutory requirements for recording.  
 2-6-17  
 Date *Betty L. Stevens*  
 Review Officer



© Copyright

Job No. 15136